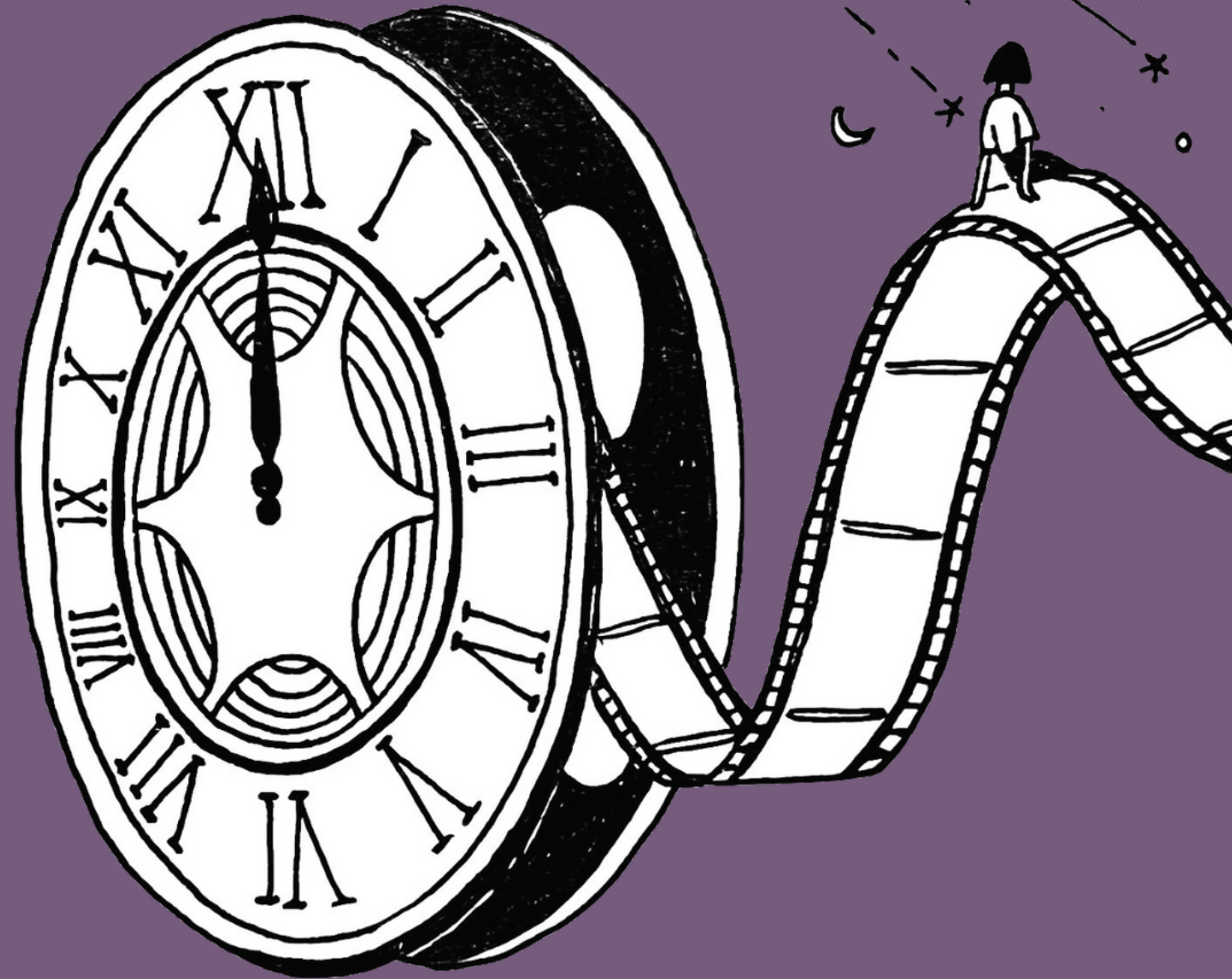


2023/24

VOGUE
CHARITY FASHION SHOW

DAYS
OF
BEING



creative directors:
maya gelfand, kat doerrie, maya hochberg

“oh god it’s wonderful. to get out of bed, and drink too much coffee, and smoke too many cigarettes, and love you so much.” – Frank O’Hara

Join us as we celebrate the art of existence, and together, process the vastness of the everyday. Days of Being is an appreciation of simplicity, an understanding of the coherence in humanity, a practice of reflection. As we walk through the stages of life, and their accompanying emotions, we can start to unpack the beauty of hindsight, the sweetness of sensitivity, and the steadiness of growth. It is only through this level of reflection that we can find gratitude.



Nightlight



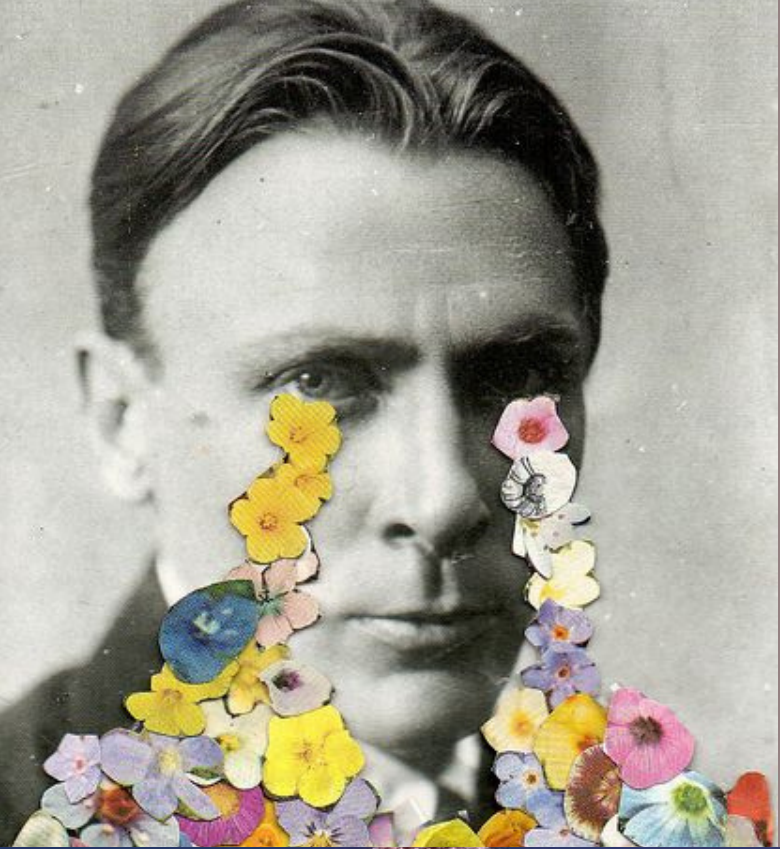
Scene I

Nightlight embodies innocence. This scene captures the whimsical imagination that shines in youth and the pureness and wholesomeness characteristic of younger years. The scene captures simplistic joys, the beauty in authentic bonds and a sense of freedom within nature. We explore the ease of living beneath a haze of naivety. Nightlight displays this glorious freedom with earthy tones, flowing silhouettes, and playful makeup looks. As we move through this scene, we ask that you allow your mind to soften and explore its wildest imaginations.



Growing Pains





SCENE II

Growth is essential to life. As humans, we are constantly evolving and changing, but we all know that this change is not always pleasant or comfortable. Often, intense periods of growth are accompanied by turmoil and uncertainty. This feeling is all too familiar in adolescence. You don't always like who you see in the mirror, you feel misunderstood, you can't quite see where there is room for you. Despite this pain and exhaust, these periods are where we come to terms with who we are and begin to carve out a space for ourselves that is authentic and powerful. To represent this strenuous change, Growing Pains will evoke questions about self-love and maturation.



A painting of a woman in a white dress, seen from behind, standing in a room. A bright window in the background casts a strong light, creating a warm, golden glow. The room has dark walls and a doorway to the right. The overall style is impressionistic with visible brushstrokes.

On the Verge

SCENE III

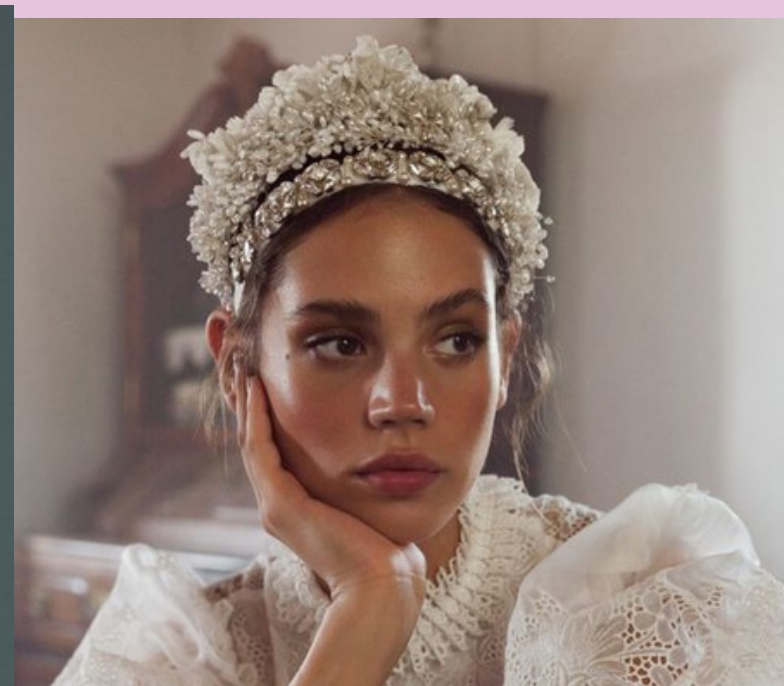
Sometimes, it all feels like a little bit too much. The confines of your everyday seep into your bones. The demands from family, the rigidity of school, and the pressures of the social sphere. You're on the verge of a breakdown. On the Verge represents the youthful desire for rebellion and control. The craving for power and freedom, and the subsequent frustration of being so far away from it. As we mature and gain control, this feeling comes back to us. We find it in first jobs and arguments, in places where we feel belittled or powerless. As we grow, however, we find that the power inside us all along. On the Verge plays with red tones and smokey makeup to portray angst.



First Love Fever

SCENE IV

First love holds a power like nothing else. Teaching compassion and opening our malleable, young hearts, first loves have the capacity to be life-altering. All consuming, confusing, blissful. Everything holds a new depth; the good, the gorgeous, the gut-wrenching. It is soulful, addictive, and tumultuous. It is pure and untouched, our understandings of romance are still idealistic; no bubbles have been popped and no hearts have been broken. Everything feels right when it's the first time you've felt anything at all. This scene is glittered with a dreamy vibe, and laced with passion; we play with dewy makeup looks and bridal-inspired figures.

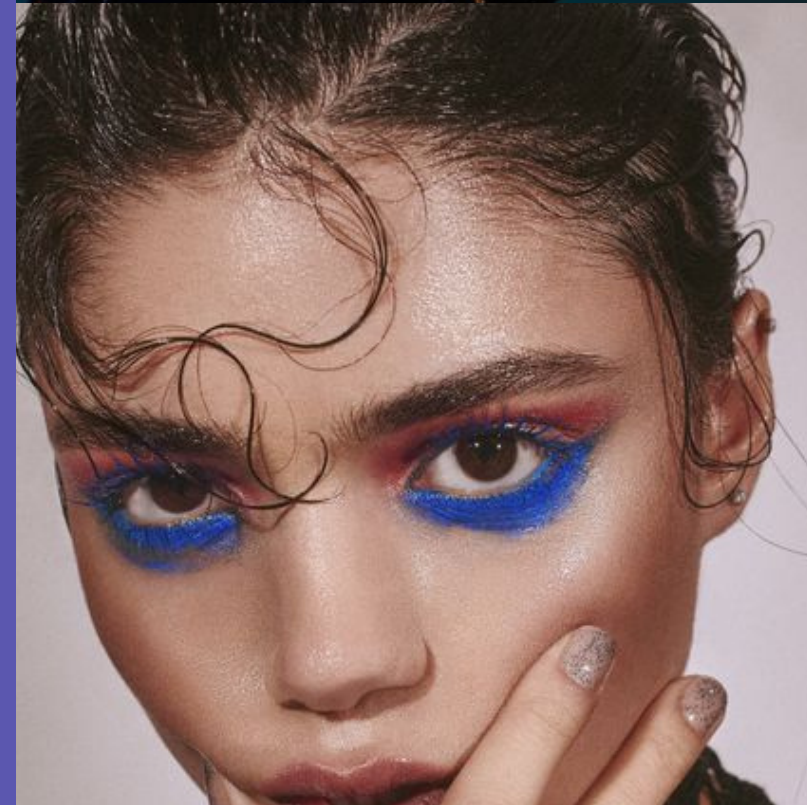


Still, I Rise



SCENE V

This scene is dedicated to representing the freedom that accompanies self-satisfaction. How good does it feel to be unleashed from the pressure to conform? How striking is it to make choices that honour your true desires? Still, I Rise is a tribute to that newfound power, the power in persistence, the power in authenticity, the power in allowing yourself to start again. Let this scene serve as a reminder that it is never too late to reclaim your power. You deserve it, and you are only accountable to YOU. Still, I Rise will feature fierce eye makeup looks, power-pant suits, and deeply contrasting lighting.



A rearview view from a car window. The left side shows a dense green forest. The right side shows a grassy field with a few trees in the distance. The car's interior, including the rearview mirror and part of the dashboard, is visible in the foreground.

Rearview



SCENE VI

What are we if not a collection of our lived experiences, our memories, our feelings? We are inevitably laced with the five-year-old skipping through the park and the seventeen-year-old locking their bedroom door and hiding away. While we are growing and everchanging, we are also one with ourselves. It is only natural to feel deeply attached and reminiscent of our past experiences, relationships, and feelings. This longing is understood as nostalgia. Nostalgia places a veil of beauty over all that we once lived. Rearview honours this veil by beautifying every moment: soft light, pastel tones, and an aura of coziness.

A woman with long, dark, wavy hair is shown from the back, wearing a vibrant red dress. She is surrounded by a shower of colorful confetti in shades of red, orange, yellow, and green. The background is a blurred crowd of people, suggesting a high-profile fashion event.

Long Live

SCENE VII

Long Live is a tribute to a growth that never stops. It is a celebration of the glamorous milestones that happen once in a lifetime and the glimpses of joy we see every day. It is the bow at your graduation, the ladybug on your morning stroll, the first kiss on your wedding day, and the smile from a stranger. It is your baby's first step and your best friend's hug. It is the humanity that links us all together; our desire to make beautiful moments and our need for companionship. Long live is our love letter to the beautiful world we have created, full of emotionally dense moments. If you keep your eyes open, you just might find a piece of poetry every afternoon. Join us for Long Live, where we absorb life's sweetness in bright colour, joyful song and warm light.



VOGUE
CHARITY FASHION SHOW

We are so excited to bring you along on this journey, which we hope will provoke reflection and mindfulness. We believe the themes we explore are deeply human, and with that, our goal is for every audience member to feel connected and understood. We are so proud to be a part of VCFS, a place that forefronts both creativity and philanthropy, making it a priority to support our community. This year, VCFS is so honoured to be supporting Extend-A-Family. We thank you in advance for your support and generous donations. We cannot wait for you to see what we have planned.

Creative Directors

- Maya Gelfand, Kat Doerrie, Maya Hotchberg

VOGUE
CHARITY FASHION SHOW